



KENTRO  
SPOUDON  
LAIKOU  
THEATROU



# SPECTACOLO Project

ERASMUS+

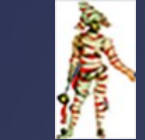
STAGE DESIGN WORKSHOP





# SPECTACOLO Project

ERASMUS+



KENTRO  
SPOUDON  
LAIKOU  
THEATROU

**Welcome every one,  
I will talk a lot ...(Sorry)  
You can Take notes ...  
With a pencil &a simple paper  
Write down any questions  
At the end we will have a discussion  
I prefer you to have the cameras ON  
To see each other face to face  
And the mics off to avoid noises from outside**

**STAGE DESIGN WORKSHOP**

# The theater buildings

---



KENTRO  
SPOUDON  
LAIKOU  
THEATROU

The significance of theater buildings spans various aspects, including cultural, social, historical, architectural, and economic significance.

- serve as hubs for cultural expression
- bring people together,
- fostering a sense of community and shared experience



# The kind of theaters

---



KENTRO  
SPOUDON  
LAIKOU  
THEATROU

- |                                 |   |
|---------------------------------|---|
| <b>Ancient Greek theater</b>    | · <b>Thrust Theater</b>                   |
| <b>Roman Amphitheater</b>       | · <b>Round theater</b>                    |
| <b>Elizabethan theater</b>      | · <b>Black Box Theater</b>                |
| <b>Arena Theater</b>            | · <b>Outdoor Theater</b>                  |
| <b>Proscenium</b>               | · <b>Site-Specific Theater</b>            |
| <b>or Italian stage theater</b> | · <b>Experimental/Avant-Garde Theater</b> |



**Spectacolo project**



**STAGE DESIGN WORKSHOP**



# The ancient Greek theater



KENTRO  
SPOUDON  
LAIKOU  
THEATROU

Ancient Greek theater emerged in the 6th century BCE as part of religious festivals honoring the god Dionysus, the god of wine, fertility, and theater



**Spectacolo project**



**STAGE DESIGN WORKSHOP**



Funded by the  
European Union



# The Roman amphitheater



KENTRO  
SPOUDON  
LAIKOU  
THEATROU

In ancient times,  
Roman amphitheaters  
were circular or oval arenas  
with tiered seating  
surrounding  
A central performance area.



Spectacolo project



STAGE DESIGN WORKSHOP



Funded by the  
European Union

# The Medieval era



KENTRO  
SPOUDON  
LAIKOU  
THEATROU

Medieval theater was  
deeply rooted in  
religious traditions,  
with much of the early  
drama centered  
around biblical stories  
and moral lessons.



Spectacolo project



STAGE DESIGN WORKSHOP



# The Elizabethan theater



KENTRO  
SPOUDON  
LAIKOU  
THEATROU

Theaters  
in Elizabethan England  
were typically  
open-air structures, often  
circular or octagonal  
in shape, with a central stage  
surrounded by seating  
on three sides.



Spectacolo project



STAGE DESIGN WORKSHOP



Funded by the  
European Union



# The Arena theater



KENTRO  
SPOUDON  
LAIKOU  
THEATROU

At Arena Theater  
the audience  
is all around the stage  
in this style,  
and is related to the  
"theater in the round."



Spectacolo project



STAGE DESIGN WORKSHOP



# The Italian stage or proscenium



KENTRO  
SPOUDON  
LAIKOU  
THEATROU

The layout of Italian stage theaters  
can vary.  
Depending on the specific  
theater's architecture,  
historical period, and purpose.  
There are some common features  
found in many Italian stage layouts





# The thrust theater

the thrust theater building  
offers a dynamic  
and engaging space for  
theatrical performances,  
where the boundaries  
between stage and  
audience are blurred



KENTRO  
SPOUDON  
LAIKOU  
THEATROU



Spectacolo project



STAGE DESIGN WORKSHOP



Funded by the  
European Union



# The thrust theater

STAGE DESIGN WORKSHOP



KENTRO  
SPOUDON  
LAIKOU  
THEATROU

## 3/4 THRUST STAGE

Spectacolo  
project



Funded by the  
European Union

# Theater in the round



KENTRO  
SPOUDON  
LAIKOU  
THEATROU

theater-in-the-round  
features a performance  
space surrounded by  
audience seating  
on all sides



Spectacolo project



STAGE DESIGN WORKSHOP



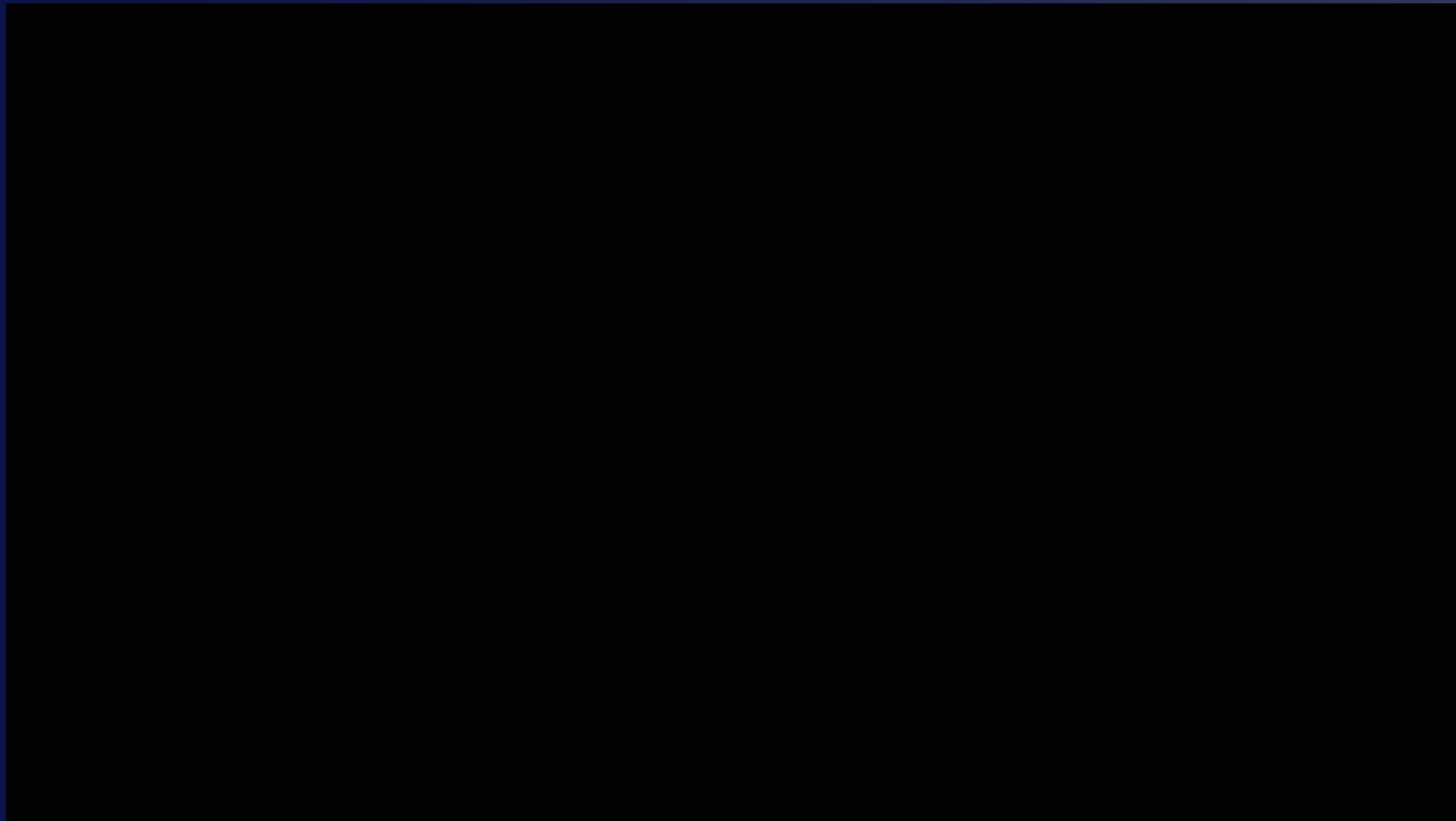
# Theater in the round

---

STAGE DESIGN WORKSHOP



KENTRO  
SPOUDON  
LAIKOU  
THEATROU



Spectacolo  
project



Funded by the  
European Union



# Black box Theater

---



KENTRO  
SPOUDON  
LAIKOU  
THEATROU

The black box  
is a space stripped bare  
its walls unadorned  
and its floor unmarked



Spectacolo project



STAGE DESIGN WORKSHOP



Funded by the  
European Union

# Black box Theater

STAGE DESIGN WORKSHOP



KENTRO  
SPOUDON  
LAIKOU  
THEATROU



Spettacolo  
project



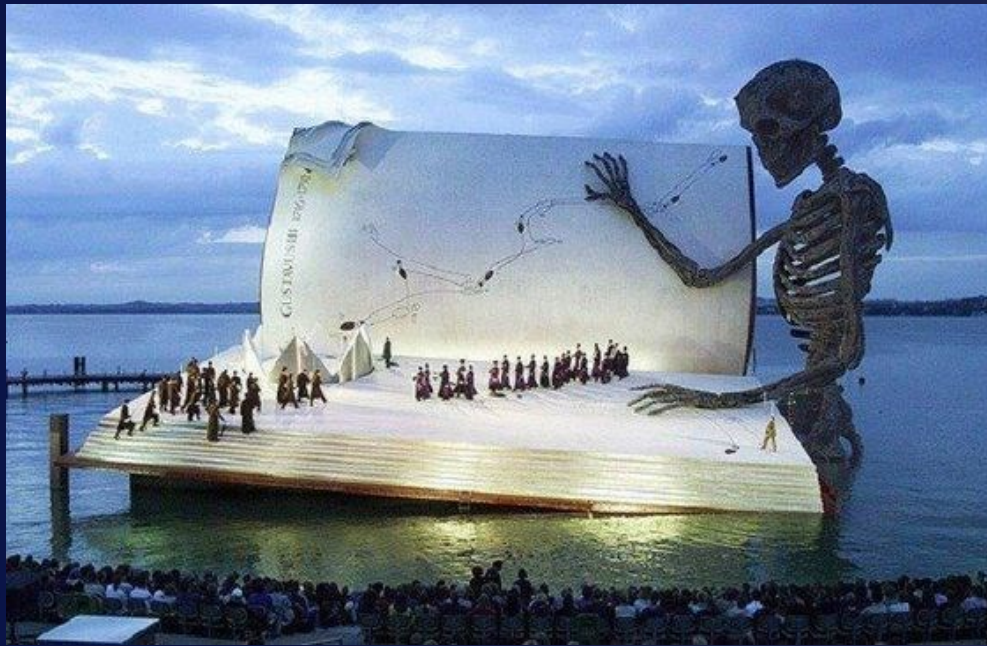
Funded by the  
European Union



# Out door Theater



KENTRO  
SPOUDON  
LAIKOU  
THEATROU



**STAGE DESIGN WORKSHOP**

**Spectacolo project**

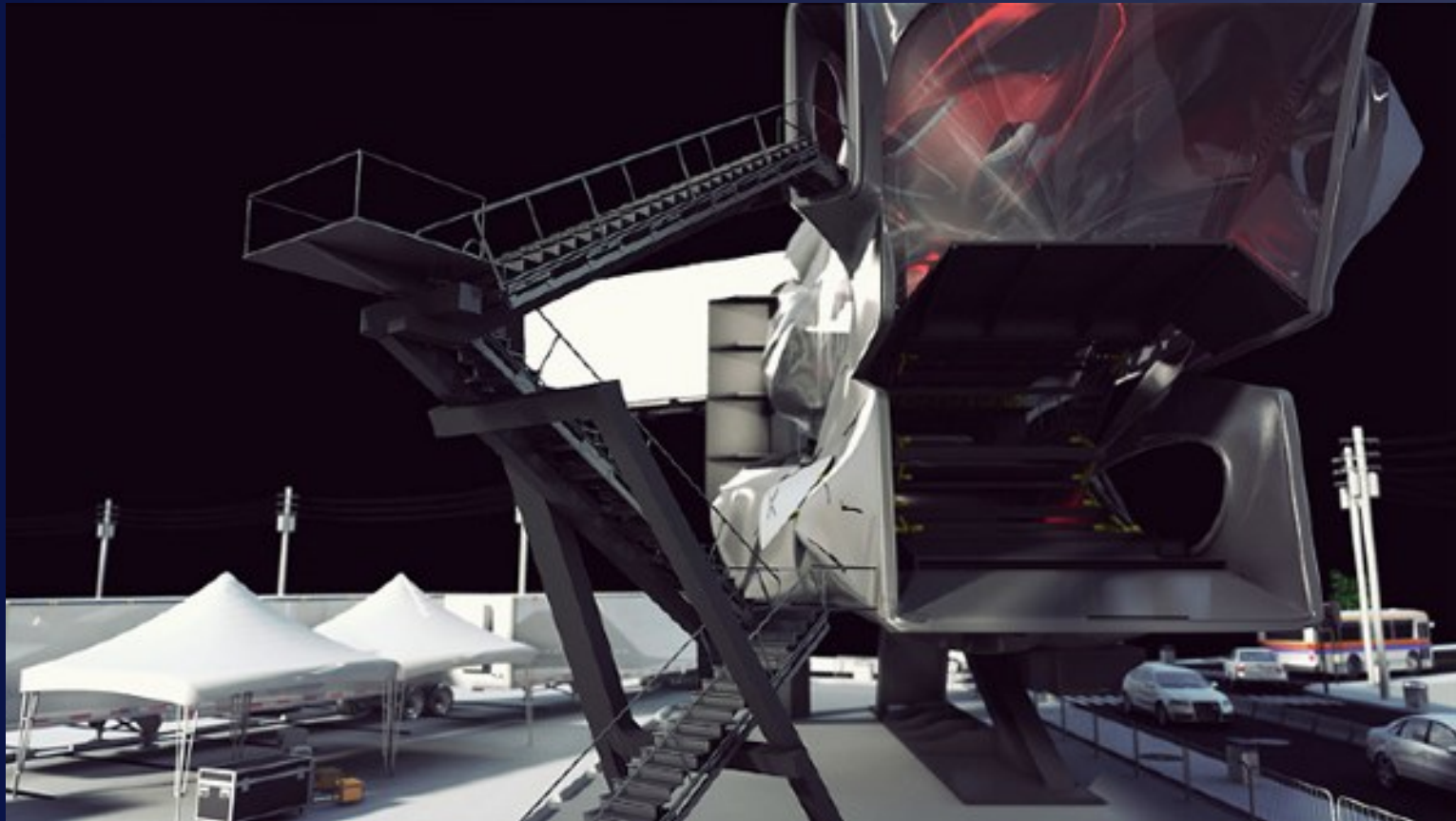




# Experimental or Avant garde theater spaces



KENTRO  
SPOUDON  
LAIKOU  
THEATROU



Spectacolo project

STAGE DESIGN WORKSHOP



Funded by the  
European Union

# Site specific Theater

---



KENTRO  
SPOUDON  
LAIKOU  
THEATROU



Spectacolo project



STAGE DESIGN WORKSHOP



Funded by the  
European Union

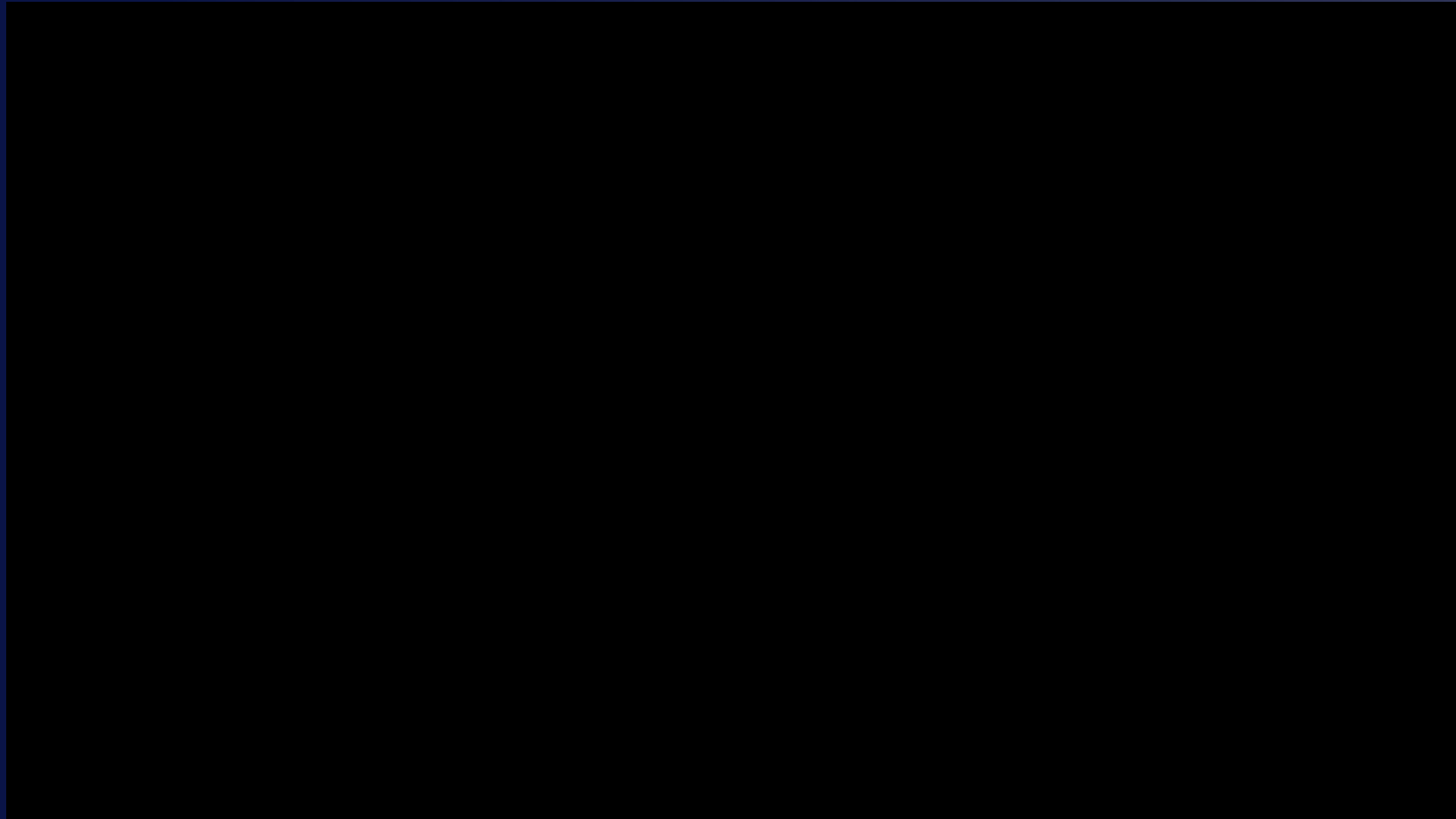
# Site specific Theater

---

STAGE DESIGN WORKSHOP



KENTRO  
SPOUDON  
LAIKOU  
THEATROU



**Spectacolo  
project**





Spectacolo project

# Site specific Theater



Theater KTO  
Poland



KENTRO  
SPOUDON  
LAIKOU  
THEATROU



Performing on main square in Krakow "reality of working for corporation in 21 century"

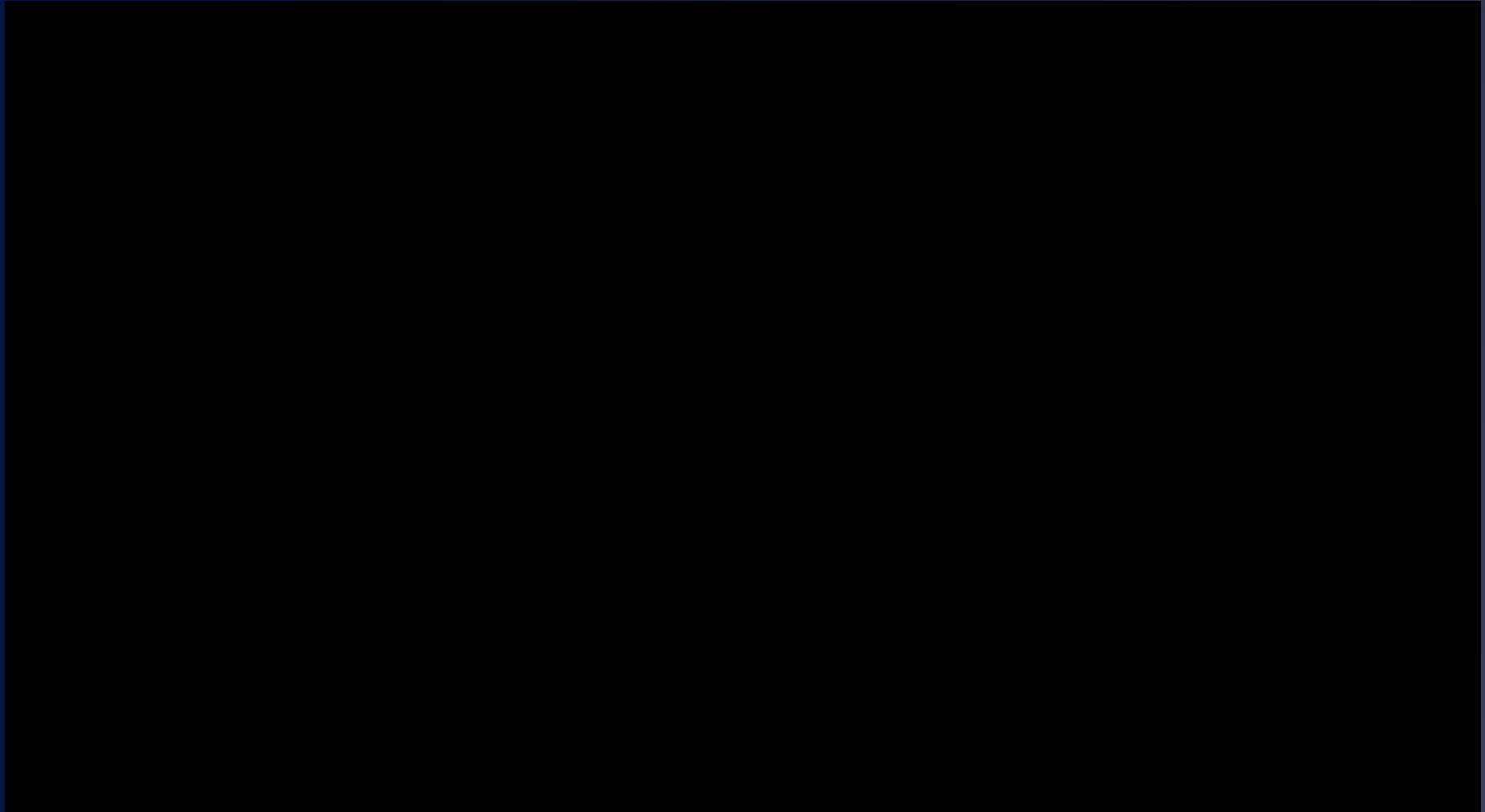
Spectacolo project

# Site specific Theater

Theater KTO  
Poland



KENTRO  
SPOUDON  
LAIKOU  
THEATROU



The BLIND based on the novel BLINDNESS by JOSE SARAMANGOU



**Spectacolo project**

# The conclusions

- The set designer must communicate with the space
- The set designer is not just a man who knows
- the million technical secrets of theatre
- and set design. He is an artist
- The set designer deals with the materials
- and with the meanings

**The BLIND based on the novel BLINDNESS by JOSE SARAMANGOU**



KENTRO  
SPOUDON  
LAIKOU  
THEATROU







# SPECTACOLO Project



KENTRO  
SPOUDON  
LAIKOU  
THEATROU

ERASMUS+

STAGE DESIGN WORKSHOP

1

**Thank you  
for your attention**

